

PLEASE CHECK WWW.MOLEX.COM FOR LATEST PART INFORMATION

Part Number: [0351890281](#)
Status: **Active**
Description: 4.75mm (.187") Tab, MP-Lock™ Housing, 2 Circuits, 10.00mm (.394") Pitch, UL94V-0, Natural

Documents:

[Drawing \(PDF\)](#) [RoHS Certificate of Compliance \(PDF\)](#)
[Product Specification PS-35189-004 \(PDF\)](#)

General

Product Family Crimp Housings
 Series [35189](#)
 Product Name MP-Lock™

Physical

Breakaway No
 Circuits (maximum) 2
 Gender Female
 Glow-Wire Compliant No
 Keying to Mating Part None
 Lock to Mating Part None
 Number of Rows 1
 Packaging Type Bag
 Panel Mount No
 Pitch - Mating Interface (in) 0.394 In
 Pitch - Mating Interface (mm) 10.00 mm
 Polarized to Mating Part Yes
 Stackable No
 Temperature Range - Operating -40°C to +105°C

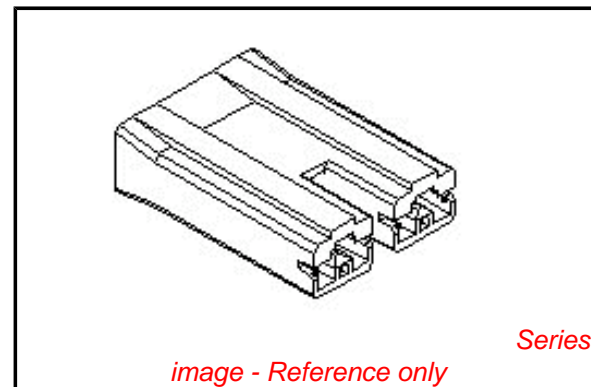
Electrical

Current - Maximum per Contact 12A

Material Info

Reference - Drawing Numbers

Product Specification PS-35189-004, RPS-35189-002
 Sales Drawing SD-35189-*281



EU RoHS

ELV and RoHS Compliant
REACH SVHC
 Not Reviewed
Halogen-Free Status

China RoHS



Need more information on product environmental compliance?

Email productcompliance@molex.com
 For a multiple part number RoHS Certificate of Compliance, [click here](#)

Please visit the [Contact Us](#) section for any non-product compliance questions.

Search Parts in this Series

[35189Series](#)

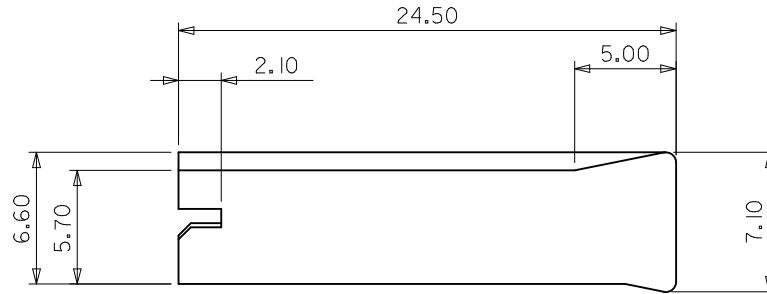
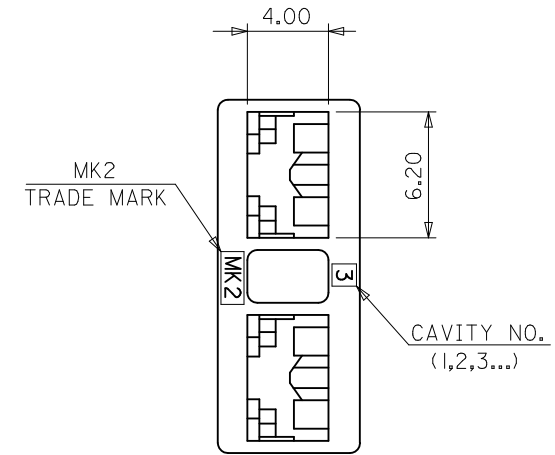
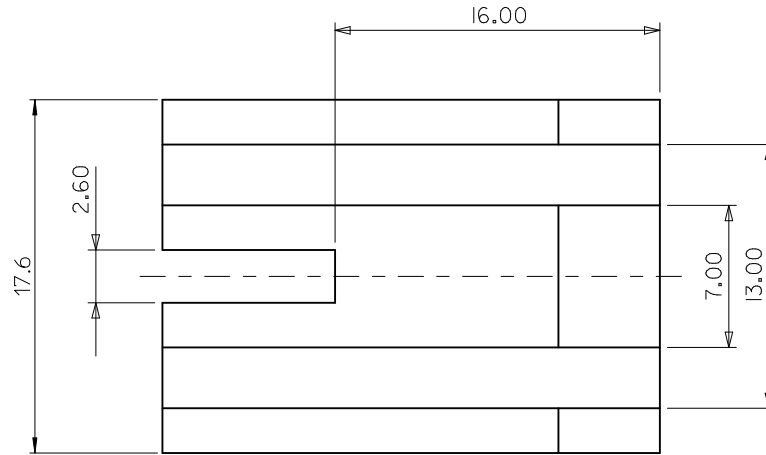
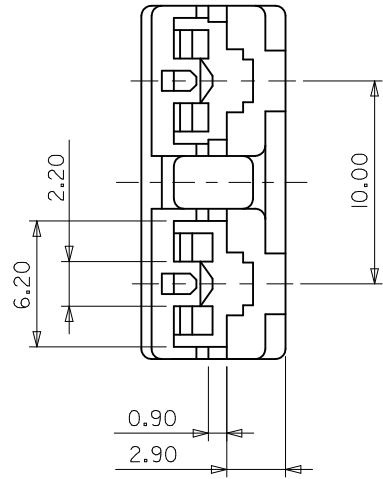
Mates With

Appliance Heater

Use With

[35068](#) MP-Lock™ Quick Disconnect

10 9 8 7 6 5 4 3 2 1



NOTES

1. MATERIALS : POLYAMIDE66 , UNFILLED, UL94V-0; COLOR: NATURAL(WHITE)
2. PRODUCT SPECIFICATION: PS-35189-004
3. USE WITH: .187 MP-LOCK RECEPTACLE TERMINAL SERIES 35068

ENG NO. (MATERIAL NO.)	RIB TYPE	
35189-0281 (351890281)		BOTH RIB TYPE.
35189-7281 (351897281)		LEFT RIB TYPE.
35189-8281 (351898281)		RIGHT RIB TYPE.

REVISED EC NO: KOR2010-0127 DRW:HNHSONG 2010/02/17 CHK:DWYANG 2010/02/17 APPR:YUNSIKIM 2010/02/17	QUALITY SYMBOLS 	GENERAL TOLERANCES (UNLESS SPECIFIED)		DIMENSION STYLE MM ONLY		SCALE 4:1	DESIGN UNITS METRIC	THIRD ANGLE PROJECTION		
		4 PLACES ± ---	± ---	DRAWN BY	DATE	TITLE .187 MP-LOCK HOUSING-2P 10MM PITCH				
		3 PLACES ± ---	± ---	CHECKED BY	DATE					
		2 PLACES ± 0.25	± ---	WYYANG	2008/01/02	APPROVED BY EHJUNG 2008/01/02				
1 PLACE ± 0.25	± ---	MATERIAL NO. SEE TABLE		DOCUMENT NO. SD-35189-*281						
ANGULAR ± 1 °		DRAFT WHERE APPLICABLE MUST REMAIN WITHIN DIMENSIONS							SIZE A3	SHEET NO. 1 OF 1

9 8 7 6 5 4 3 2 1